

Please read and save these instructions. Read through this owner's manual carefully before using product. Protect yourself and others by observing all safety information, warnings, and cautions. Failure to comply with instructions could result in personal injury and/or damage to product or property. Please retain instructions for future reference.



## 1/2" DRIVE IMPACT WRENCH

### FOR CUSTOMER SERVICE

Technical Question?

**CALL 1-866-458-2472**  
**customerservice@oem-tools.com**

### UNPACKING

After unpacking unit, inspect carefully for any damage that may have occurred during transit. Check for loose, missing, or damaged parts. If any damage is observed, a shipping damage claim must be filed with carrier. DO NOT use the OEMTOOLS™ Impact Wrench if broken, bent, cracked or damaged parts (including labels) are noted. Any Impact Wrench that appears damaged in any way, operates abnormally or is missing parts should be removed from service immediately. If you suspect that the Impact Wrench was subjected to shock load (a load that was dropped suddenly, unexpectedly, etc.) immediately discontinue use until it has been checked by a factory authorized service center.



### **▲** WARNING

The following safety information is provided as a guideline to help you operate your Impact Wrench under the safest possible conditions. Any tool or piece of equipment can be potentially dangerous to use when safety or safe handling instructions are not known or not followed. The following safety instructions are to provide the user with the information necessary for safe use and operation. Please read and retain these instructions for the continued safe use of your tool. Failure to follow instructions listed below may result in serious injury. In addition, make certain that anyone who uses the equipment understands and follows these safety instructions as well.

### Explanation of Safety Signal Words

**▲WARNING:** Indicates a potentially hazardous situation which, if not avoided, could result in death or serious injury.

**▲CAUTION:** Indicates a potentially hazardous situation which, if not avoided, may result in minor or moderate injury.

**CAUTION:** Used without the safety alert symbol indicates a potentially hazardous situation which, if not avoided, may result in property damage.

**NOTES:** Provide clarity and helpful information.

Thank you very much for choosing an OEMTOOLS™ Product!

For future reference, please register your new tool at [www.oem-tools.com](http://www.oem-tools.com) and complete the owner's record below:

Model: \_\_\_\_\_ Purchase Date: \_\_\_\_\_

Save the receipt, warranty and these instructions. It is important that you read the entire manual to become familiar with this product before you begin using it. This product is designed for certain applications only. OEMTOOLS™ cannot be responsible for issues arising from modification. We strongly recommend this product is not modified and/or used for any application other than that for which it was designed. If you have any questions relative to a particular application, DO NOT use the product until you have first contacted customer service to determine if it can or should be performed on the product.

**▲WARNING:** This product can expose you to chemicals, including lead, which are known to the State of California to cause cancer and birth defects or other reproductive harm. For more information, go to [www.P65Warnings.ca.gov](http://www.P65Warnings.ca.gov).



# 1/2" DRIVE IMPACT WRENCH

## POWER TOOL SAFETY

### ▲WARNING:

1. Read all safety warnings and instructions. Failure to follow the warnings and instructions may result in electric shock, fire and/or serious injury.
2. Save all warnings and instructions for future reference.

## WORK AREA SAFETY

1. Keep work area clean and well lit. Cluttered or dark areas invite accidents.
2. DO NOT operate power tools in explosive atmospheres, such as in the presence of flammable liquids, gases or dust. Power tools create sparks which may ignite the dust or fumes.
3. Keep children and bystanders away while operating a power tool. Distractions can cause you to lose control.

## ELECTRICAL SAFETY

1. Power tool plugs must match the outlet. Never modify the plug in any way. DO NOT use any adapter plugs with earthed (grounded) power tools. Unmodified plugs and matching outlets will reduce risk of electric shock.
2. Avoid body contact with earthed or grounded surfaces such as pipes, radiators, ranges, and refrigerators. There is an increased risk of electric shock if your body is earthed or grounded.
3. DO NOT expose power tools to rain or wet conditions. Water entering a power tool will increase the risk of electric shock.
4. DO NOT abuse the cord. Never use the cord for carrying, pulling or unplugging the power tool. Keep cord away from heat, oil, sharp edges, or moving parts. Damaged or entangled cords increase the risk of electric shock.
5. When operating a power tool outdoors, use an extension cord suitable for outdoor use. Use of a cord suitable for outdoor use reduces the risk of electric shock.
6. If operating a power tool in a damp location is unavoidable, use a residual current device (RCD) protected supply. Use of a ground fault circuit interrupter (GFCI) reduces the risk of electric shock.
7. When operating a power tool outside, use an outdoor extension cord marked "W-A" or "W".

## PERSONAL SAFETY

1. Stay alert, watch what you are doing, and use common sense when operating a power tool. DO NOT use a power tool while you are tired or under the influence of drugs, alcohol or medication. A moment of inattention while operating power tools may result in serious personal injury.
2. Use personal protective equipment. Always wear eye protection. Protective equipment such as dust mask, non-skid safety shoes, hard hat, or hearing protection used for appropriate conditions will reduce personal injuries.
3. Prevent unintentional starting. Ensure the switch is in the OFF position before connecting to power source and/or battery pack, picking up or carrying the tool.
4. Carrying power tools with your finger on the switch or energizing power tools that have the switch ON invites accidents.
5. Remove any adjusting key or wrench before turning the power tool ON. A wrench or a key left attached to a rotating part of the power tool may result in personal injury.
6. DO NOT overreach. Keep proper footing and balance at all times. This enables better control of the power tool in unexpected situations.
7. Dress properly. DO NOT wear loose clothing or jewelry. Keep your hair, clothing and gloves away from moving parts. Loose clothes, jewelry or long hair can be caught in moving parts.
8. If devices are provided for the connection of dust extraction and collection facilities, ensure these are connected and properly used. Use of dust collection can reduce dust-related hazards.
9. DO NOT use this Impact Wrench for tasks it is not designed to perform.

## POWER TOOL USE AND CARE

1. DO NOT force the power tool. Use the correct power tool for your application. The correct power tool will do the job better and safer at the rate for which it was designed.
2. DO NOT use the power tool if the switch does not turn it ON and OFF. Any power tool that cannot be controlled with the switch is dangerous and must be repaired.
3. Disconnect the plug from the power source and/ or the battery pack from the power tool before making any adjustments, changing accessories, or storing power tools. Such preventive safety measures reduce the risk of starting the power tool accidentally.
4. Store idle power tools out of the reach of children and DO NOT allow persons unfamiliar with the power tool or these instructions to operate the power tool. Power tools are dangerous in the hands of untrained users.



## 1/2" DRIVE IMPACT WRENCH

5. Maintain power tools. Check for misalignment or binding of moving parts, breakage of parts and any other condition that may affect the power tool's operation. If damaged, have the power tool repaired before use. Many accidents are caused by poorly maintained power tools.
6. Use the power tool, accessories and tool bits, etc. in accordance with these instructions, taking into account the working conditions and the work to be performed. Use of the power tool for operations different from those intended could result in a hazardous situation.
7. Hold power tool by insulated gripping surfaces when performing an operation where the cutting tool may contact hidden wiring or its own cord. Contact with a "live" wire will make exposed metal parts of the tool "live" and shock the operator.
8. Use clamps or another practical way to secure and support the workpiece to a stable platform. Holding the work by hand or against your body leaves it unstable and may lead to loss of control.
9. DO NOT use this Impact Wrench for tasks it was not designed to perform.
10. Never lay workpiece on hard surfaces like concrete, stone, etc.
11. The Impact Wrench is wired at the factory for 110–120V operation. It must be connected to a 110–120V, 15A time delayed fuse or circuit breaker. To avoid shock or fire, replace power cord immediately if it is worn, cut or damaged in any way.
12. Avoid accidental starting. Be sure switch is OFF before plugging in.
3. Always use hearing protection when operating the Impact Wrench.
4. Hold power tool by insulated gripping surfaces when performing an operation where the fastener may contact hidden wiring or its own cord. Fasteners contacting a "live" wire may make exposed metal parts of the power tool "live" and could give the operator an electric shock.
5. Use only impact sockets and accessories that are designed for use with an Impact Wrench. DO NOT use chrome plated sockets and accessories. Chrome plated sockets and accessories are designed for hand use only and MUST NOT be used with an Impact Wrench. They may shatter and possibly cause serious injury.
6. Before each use, check the impact sockets and accessories for excessive wear or cracks. Worn or damaged sockets or accessories may shatter and possibly cause serious injury. Worn accessories may allow the socket to come off during operation of the Impact Wrench.
7. Never use the Impact Wrench as a torque wrench. Always use a torque wrench to adjust the fastener to the specified torque.
8. Keep the Impact Wrench handle and body clean and free of oil and grease. Always use a clean dry cloth when cleaning. DO NOT use solvents, brake fluid, gasoline or other petroleum products to clean the tool. They will damage the tool.
9. DO NOT wear neckties or loose clothing.
10. When wearing gloves, they must be tight fitting and slip resistant type. Leather gloves offer the best protection.
11. Always use two hands when operating the Impact Wrench. Use one hand on the handle and the other on the front of the tool body.
12. Never place your hand so it is touching the socket or accessory when the tool is turned ON. Your hand could be seriously injured.
13. Always remove the plug from the power source before installing or removing any socket or accessory.
14. Be ready for components to shift when removing any fastener. The speed of the fastener removal could cause unexpected shifting of the components.
15. DO NOT disassemble the Impact Wrench. Take it to a qualified professional when service or repair is required.
16. Never hold the workpiece in one hand and the tool in the other hand when in use.

### SERVICE

Have your power tool serviced by a qualified repair person using only identical replacement parts. This will ensure that the safety of the power tool is maintained.

### ▲WARNING:

1. Know your Impact Wrench. Read the Owner's Manual carefully. Learn the tool's applications and limitations, as well as the specific potential hazards related to this tool. Following this rule will reduce the risk of electric shock, fire, or serious injury.
2. Always wear eye protection. Any power tool can throw foreign objects into your eyes and cause permanent eye damage. ALWAYS wear safety goggles (not glasses) that comply with ANSI safety standard Z87.1. Everyday glasses have only impact resistant lenses. They ARE NOT safety glasses. Glasses or goggles not in compliance with ANSI Z87.1 could cause serious injury when they break.



# 1/2" DRIVE IMPACT WRENCH

**▲WARNING:** Disconnect the plug from the power source before making any adjustments, changing accessories or storing the tool.

To avoid electrical hazards, fire hazards or damage to the Impact Wrench, use proper circuit protection.

**▲WARNING:** Before use, read and understand all warnings, safety precautions, and instructions as outlined in the manual.

### Important Safety Instructions

The warnings, precautions, and instructions discussed in this manual cannot cover all possible conditions and situations that may occur. The operator must understand that common sense and caution are factors which cannot be built into this product, but must be supplied by the operator.

### DISPOSAL

At the end of the useful life of the OEMTOOLS™ Impact Wrench, dispose of the components according to all state, federal, and local regulations.

### PURPOSE

The OEMTOOLS™ 1/2" Drive Impact Wrench is designed to deliver high torque to tighten or loosen threaded fasteners. No other use is permitted.

### PRODUCT SPECIFICATIONS

<b>Square Drive Size:</b>	1/2" with Hog Ring
<b>Motor:</b>	120V AC, 60Hz, 8.5A
<b>Speed:</b>	2,200 RPM (no load)
<b>Impact Speed:</b>	3,000 IPM
<b>Max. Torque:</b>	400 Ft/Lbs.
<b>Tightening Torque:</b>	320 Ft/Lbs.
<b>Weight:</b>	8.3 Lbs.
<b>Cord:</b>	8 Ft.
<b>Rocker Switch:</b>	Forward/Reverse

**▲WARNING:** Double insulated tools are equipped with a polarized plug (one blade is wider than the other). This plug will fit in a polarized plug only one way. If the plug does not fit fully in the outlet, reverse the plug. If it still does not fit, contact a qualified electrician to install a polarized outlet. DO NOT change the plug in any way. Double insulation eliminates the need for the three wire grounded power cord and grounded power supply system.

**▲WARNING:** If any part is missing or damaged, DO NOT plug the Impact Wrench into the power source until the missing or damaged part is replaced.

**▲WARNING:** To avoid fire or toxic reaction, never use gasoline, naphtha, acetone, lacquer thinner or similar highly volatile solvents to clean the tool.

### EXTENSION CORD SAFETY

**▲WARNING:**

1. Keep the extension cord clear of the work area. Position the cord so that it will not get caught on the workpiece, a tool, or any other obstruction while the power tool is in use.
2. If an extension cord is used with this impact wrench, verify that it is in good condition. When using an extension cord, be sure to use one that is heavy enough to carry the current that the tool will draw. An undersized cord will cause a drop in line voltage, which will result in a loss of power and overheating.
3. The following table shows the correct size to use according to cord length and the amperage rating that is listed on the tool's nameplate.
4. When in doubt, use the next heavier gauge. The smaller the gauge number, the heavier the cord.
5. Verify that the extension cord is properly wired and in good condition. Replace a damaged extension cord immediately, or have it repaired by a qualified electrician before using it. Keep the extension cord away from sharp objects, excessive heat, and damp or wet areas.
6. Use a separate electrical circuit for power tools. This circuit must consist of not less than 14 gauge wire, and should be protected by either a 15 Amp. time-delayed fuse or a circuit breaker. Before connecting the power tool to the outlet, verify that the switch is in the OFF position, and that the voltage of the power source is the same as the voltage that is indicated on the tool's nameplate. Running this Impact Wrench at lower voltage will damage the motor.

### MINIMUM GAUGE (AWG) EXTENSION CORDS (120V use only)

Amperage rating		Total length			
		25' (7.5 m)	50' (15 m)	100' (30 m)	150' (45 m)
More than 0	Not more than 6	18	16	16	14
6	10	18	16	14	12
10	12	16	16	14	12
12	16	14	12	Not Applicable	

### LUBRICATION

All of the bearings in this tool are lubricated with a sufficient amount of high-grade lubricant for the life of the unit under normal conditions.

Therefore, no further lubrication is required.



# 1/2" DRIVE IMPACT WRENCH

## ASSEMBLY AND OPERATION INSTALL SOCKET

**⚠WARNING:** Use only impact sockets and accessories that are designed for use with an Impact Wrench. DO NOT use chrome plated sockets and accessories. Chrome plated sockets and accessories are designed for hand use only and MUST NOT be used with an Impact Wrench. They may shatter and possibly cause serious injury.

To install a socket, press the square portion of the socket (1) onto the square drive (2) of the Impact Wrench (see Fig. 1). NOTE: Slide the socket fully onto the square drive so the socket retainer (3) will hold the socket firmly in place.

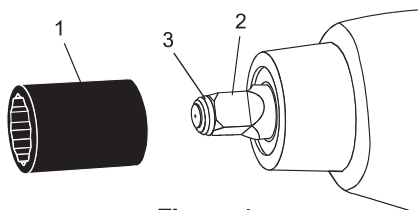


Figure 1

## FORWARD/REVERSE SWITCH

This Impact Wrench is equipped with a rocker style forward/reverse switch (1) (see Fig. 2).

1. To operate the Impact Wrench in the forward direction, press and hold the bottom part of the switch (2). This direction of rotation will tighten the fastener.
2. To operate the Impact Wrench in the reverse direction, press and hold the top part of the switch (3). This direction of rotation will loosen the fastener.

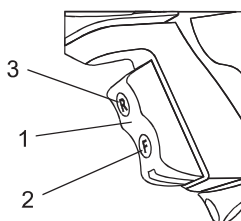


Figure 2

## REMOVING FASTENERS

1. Install the correct size of impact socket on the Impact Wrench.
2. Plug the Impact Wrench power cord into an appropriate power source.
3. Grasp the Impact Wrench handle with one hand and the front housing of the Impact Wrench with the other hand.
4. Place impact socket onto the fastener.

NOTE: Make sure the socket is fully engaged with the nut to avoid potentially damaging the socket or the wheel nut.

5. While holding the tool with a firm grasp, pull on the top part of the forward/reverse switch.

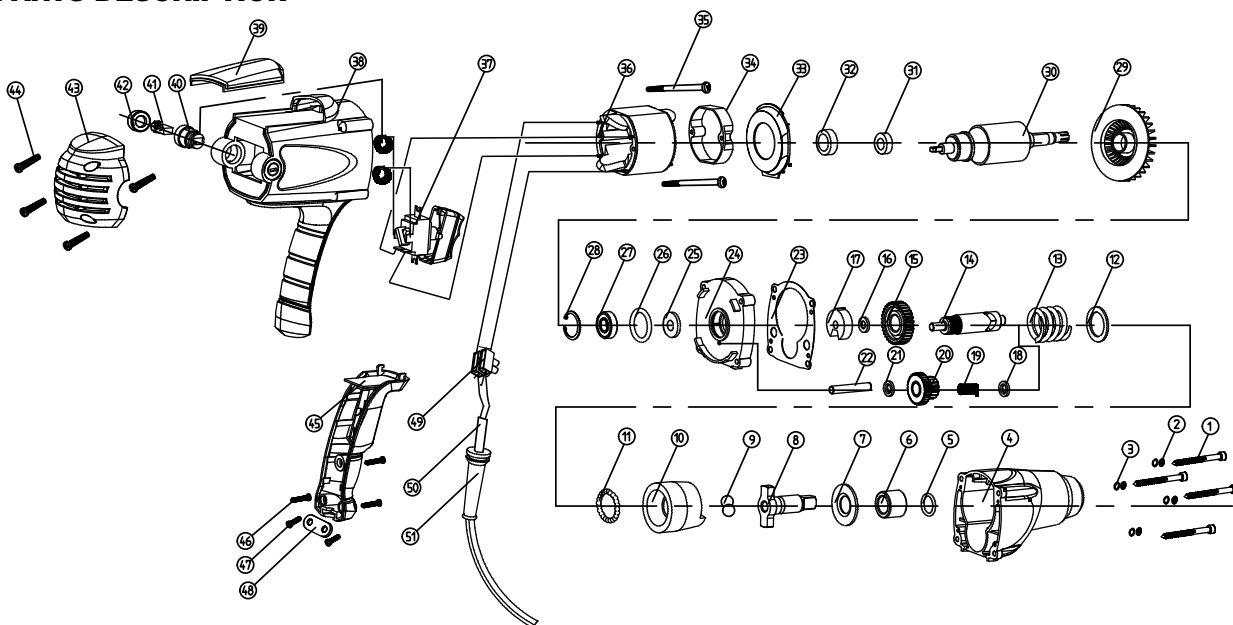


This symbol designates that this tool is listed with U.S. requirements by ETL Testing Laboratories, Inc. UL62841-1 CSA C22.2 No. 62841-1 UL62841-2-1 CSA C22.2 No. 62841-2-2



# 1/2" DRIVE IMPACT WRENCH

## PARTS DESCRIPTION



**NOTE:** Not all components of the Impact Wrench are replacement items, but are illustrated as a convenient reference for location and position in the assembly sequence.

Figure	Description	Qty.
1	Self-Tapping Screw ST4.9 x 50	4
2	Spring Washer	4
3	Washer	4
4	Front Housing	1
5	Washer	1
6	Bushing	1
7	Washer	1
8	Anvil	1
9	Ball	2
10	Impactor	1
11	Ball	19
12	Washer	1
13	Spring	1
14	Inner Shaft	1
15	Gear	1
16	Washer	1
17	Bushing	1
18	Washer	1
19	Washer	1
20	Double Connect Gear	1
21	Airproof Washer	1
22	Pin	1
23	Felt Seal	1
24	Bearing Seat	1
25	Washer	1
26	Spacer	1

Figure	Description	Qty.
27	Bearing 6000-2RS	1
28	Retaining Clip	1
29	Fan	1
30	Rotor Assembly	1
31	Bearing Sleeve	1
32	Magnetic Ring	1
33	Baffle Plate Rear	1
34	Pendulum Plate	1
35	Self-Tapping Screw ST3.9 x 70	2
36	Stator	1
37	Switch Assembly	2
38	Housing	1
39	Decorative Plate	4
40	Carbon Brush	1
41	Brush Holder	1
42	Carbon Brush Cap	2
43	Back Cover	1
44	Self-Tapping Screw ST3.9 x 20	4
45	Front Handle	1
46	Self-Tapping Screw ST3.9 x 20	3
47	Self-Tapping Screw ST3.9 x 14	2
48	Cord Clamp	1
49	Terminal Block	1
50	Cord	1
51	Cord Guard	1





## 1/2" DRIVE IMPACT WRENCH

### OEMTOOLS™ One Year Warranty

For up to one year from the date of purchase of this OEMTOOLS™ product, if you find any defect in material or workmanship (through normal usage), return it to the place of purchase or to OEMTOOLS™ for repair or replacement at our discretion. In order to obtain this service, send the product and proof of purchase (transportation pre-paid) to:

OEMTOOLS™ Q.A. Dept, 3580 E. Raines Road #3, Memphis, TN 38118.

We will not be responsible for lost or damaged goods during transportation; please insure your package. If our inspection verifies the defect, we will either repair or replace the product, or we may elect to refund the purchase price if we cannot readily and quickly provide you with a replacement. We will return repaired products at our expense, but if we determine there is no defect, or that the defect resulted from causes not within the scope of our warranty, then you must bear the cost of returning the product.

OEMTOOLS™ does not provide warranty for products labeled other than OEM® or OEMTOOLS™. OEMTOOLS™ will not provide any warranty for products subjected to abnormal use. Abnormal use includes (but is not limited to) abuse, accident, alteration, neglect, and unauthorized or unreasonable use or repairs. This warranty does not cover bits, blades, files, batteries, or calibration. We recommend that you maintain your tools and sharpen or replace blades, bits, files, and batteries as necessary. OEMTOOLS™ reserves the right to make any changes in construction or design at any time without any obligation in incorporating such changes to tools or equipment previously sold. OEMTOOLS™ makes every effort to ensure that its products meet high quality and durability standards, and warrants to the original purchaser that this product is free from defects in materials and workmanship for the period of one year from the date of purchase. This warranty does not apply to damage due directly or indirectly to misuse, abuse, negligence or accidents, repairs or alterations outside our facilities, criminal activity, improper installation, normal wear and tear or to lack of maintenance.

We shall in no event be liable for death, injuries to persons or property, or for incidental, contingent, special or consequential damages arising from the use of our product. Some states do not allow the exclusion or limitation of incidental or consequential damages, so the above limitation of exclusion may not apply to you. THIS WARRANTY IS EXPRESSLY IN LIEU OF ALL OTHER WARRANTIES, EXPRESS OR IMPLIED, INCLUDING THE WARRANTIES OF MERCHANTABILITY AND FITNESS. This warranty gives you specific legal rights, and you may also have other rights, which vary from state to state.

Don't forget to register your new OEMTOOLS™ product at [www.oem-tools.com](http://www.oem-tools.com).

## CONTACT US

3580 E. Raines Road, Suite 3, Memphis, TN 38118  
Tel: 1-866-458-2472  
[www.oem-tools.com](http://www.oem-tools.com)