



Item # 80165

24v Cordless Impact Wrench

INSTRUCTION MANUAL



GENERAL SAFETY RULES FOR ALL BATTERY OPERATED TOOLS

WARNING! READ AND UNDERSAND ALL INSTRUCTIONS.

Failure to follow all instructions listed below may result in electric shock, fire and/or serious personal injury.

SAVE THESE INSTRUCTIONS

WORK AREA

Keep your work area clean and well lit. Cluttered benches and dark areas invite accidents.

Do not operate power tools in explosive atmospheres, such as in the presence of flammable liquids, gasses, or dust. Power tools create sparks which may ignite the dust or fumes.

Keep bystanders, children, and visitors away while operating a power tool. Distractions can cause you to lose control.

Electric Safety

Do not abuse the cord. Never use the cord to carry the tool. Keep cord away from heat, oil, sharp edges, or moving parts. Replace damaged cords immediately. Damaged cords may create a fire.

A battery operated tool with integral batteries or a separate battery pack must be recharged only with the specified charger for the battery. A charger that may be suitable for one type of battery may create a risk of fire when used with another battery.

Use battery operated tool only with specifically designed battery pack. Use of any other batteries may create a risk of fire.

Personal Safety

Stay alert, watch what you are doing, and use common sense when operating a power tool. Do not use tool while tired or under the influence of drugs, alcohol, or medication. A moment of inattention while operating a power tool may result in serious personal injury.

Dress properly. Do not wear loose clothing or jewelry. Contain long hair. Keep your hair clothing, and gloves away from moving parts. Loose clothes, jewelry, or long hair can be caught in moving parts.

Avoid accidental starting. Be sure switch is in the locked or off position before inserting battery pack. Carrying tools with your finger on the switch or inserting the battery pack into a tool with the switch on invites accidents.

1

Remove adjusting keys or wrenches before turning the tool on. A wrench or a key that is left attached to a rotating part of the tool may result in personal injury.

Do not overreach. Keep proper footing and balance at all times. Proper footing and balance enable better control of the tool in unexpected situations.

Use safety equipment. Always wear eye protection. Dust mask, non-skid safety shoes, hard hat, or hearing protection must be used for appropriate conditions.

Tool Use and Care

Use clamps or other practical ways to secure and support the work piece to a stable platform. Holding the work by hand or against your body is unstable and may lead to loss of control.

Do not force tool. Use the correct tool for your application. The correct tool will do the job better and safer at the rate for which it is designed.

Do not use tool if switch does not turn it on or off. A tool that can not be controlled with the switch is dangerous and must be repaired.

Disconnect battery pack from the tool or place the switch in the locked or off position before making and adjustments, changing accessories, or storing the tool. Such preventative measures reduce the risk of starting the tool accidentally.

Store idle tools out of reach of children and other untrained people. Tools are dangerous in the hands of untrained users.

When battery pack is not in use keep it away from other metal objects like paper clips, coins, keys, nails, screws, or other small metal objects that can make a connection from one terminal to another. Shorting the battery terminals together may cause sparks, burns, or a fire.

Maintain tools with care. Keep cutting tools sharp and clean. Properly maintained tools with sharp cutting edges are less likely to bind and are easier to control.

Check for misalignment or binding of moving parts, breakage of parts, and any other condition that may affect the tool's operation. If damaged, have tool serviced before using. Many accidents are caused by poorly maintained tools.

Use only accessories that are recommended by the manufacturer for your model. Accessories that may be suitable for one tool may create a risk of injury when used on another tools.

Service

Tool service must be performed only by qualified repair personnel. Service or maintenance performed by unqualified personnel may result in a risk of injury.

When servicing a tool use only identical replacement parts. Follow instructions in the maintenance section of the manual. Use of unauthorized parts or failure to follow maintenance instructions may create a risk of shock or injury.

2

Specific Safety Rule

Hold tool by insulated gripping surfaces when performing an operation where the cutting tool may contact hidden wiring. Contact with a "live" wire will also make exposed metal parts of the tool "live" and shock the operator.

Technical Specification:

Part #	80165	
Voltage	DC24V	
No Load Speed	200 ft.lbs.	
Max. Torque	JDB 240R	
Normal charge process	Battery	80149
	Charger	80165-1
	Charging Time	6 - 8 hrs.

Functional Description

1. AC Plug
2. Battery Charger
3. Anvil
4. Reverse Switch
5. Main Switch
6. Battery Packet
7. Release Button
8. Handle



Intertek 3042597 JD5056 This symbol designates that this tool is listed with both Canadian and U.S. requirements by Underwriters Laboratories.

OPERATION

Know Your Cordless Impact Wrench Before you attempt to use any tool familiarize yourself with all operating features and safety requirements.

WARNING: Do not allow familiarity with tools make you careless. Remember that a careless fraction of a second is sufficient to inflict severe injury.

CHARGING YOUR CORDLESS IMPACT WRENCH

The battery pack for this tool has been shipped in a low charge condition to prevent possible problems. Therefore, you should charge it prior to use.

3

Note: Batteries will not reach full charge the first time they are charged. Allow several cycles (drilling followed by recharging) for them to fully charge.

CHARGING:

Charging time is 6-8 hours. Be sure to read all safety instructions before using your charger. This product is not user serviceable. There are no user serviceable parts inside the charger. Servicing at an authorized service center is required to avoid damage to static sensitive internal components.

Read all of the instructions in the battery charger section of this manual before attempting to charge the battery pack for your tool. Always use correct battery pack (pack supplied with tool or replacement pack exactly like it.). Never install any other battery pack, it will ruin your tool and may create a hazardous condition.

Charging Procedure

These chargers require no adjustment and are designed to be as easy as possible to operate. Simply place your battery packs into the receptacle of a plugged in charger and it will automatically charge the pack.

1. Plug the charger into an appropriate AC power outlet.
2. Insert the battery pack into the charger making sure the pack is fully seated in the charger. The red LED lights to tell you that the battery pack is on charge.
3. The battery pack will be fully charged in 6-8 hours (8 hrs. for a new or completely discharged battery.) When the green LED lights the charging is completed. The pack is fully charged and may be used at this time or left in the charger.

Important charging notes:

Longest life and best performance can be obtained if the battery is charged when the air temperature is between 65° F (18-24° C). DO not charge the battery pack in an air temperature below +40° F (+4.5 C°), or above +105° F (+40.5 C°). This is important and will prevent serious damage to the battery pack.

1. The charger and battery pack may become warm to the touch while charging. This is a normal condition, and does not indicate a problem.
2. If the battery pack does not charge properly:
 - a. Check current at receptacle by plugging in a lamp or other appliance.
 - b. Check to see if receptacle is connected to a light switch which turns power off when you turn out the light.
 - c. Move charger and battery pack to a location where the surrounding air temperature is approximately 65° F to 75° F (18-24° C).
 - d. If charging problems persist, take or send tool battery pack and charger to your local service center.
3. The battery pack should be recharged when it fails to produce sufficient power on jobs which were easily done previously. DO NOT CONTINUE to use under these conditions. Follow charging procedure. You may also charge a partially used pack whenever you desire with no adverse affect on the battery pack.
4. Under certain conditions, with the charger plugged in to the power supply, the exposed charging contacts inside the charger can be shorted by foreign materials. Foreign materials of a conductive nature such as, but not limited to, steel wool, aluminum foil, or any buildup of metallic particles should be kept away from charger cavities. Always unplug the charger from the power supply when there is no battery pack in the cavity. Unplug charger before attempting to clean.
5. Do not immerse charger in water or any other liquid.
6. **WARNING:** do not allow any liquid to get inside charger. Electric shock may result. To facilitate the cooling of the battery pack after use, avoid placing the charger or battery pack in a warm environment such as in metal shed, or an un-insulated trailer.
7. **CAUTION:** never attempt to open the battery pack for any reason. If the plastic housing of the battery pack breaks or cracks, return to a service center for recycling.

NOTE:

The battery charger is for charging the GreatNeck battery pack, never use it for other purposes or for other manufacturer's batteries.

4

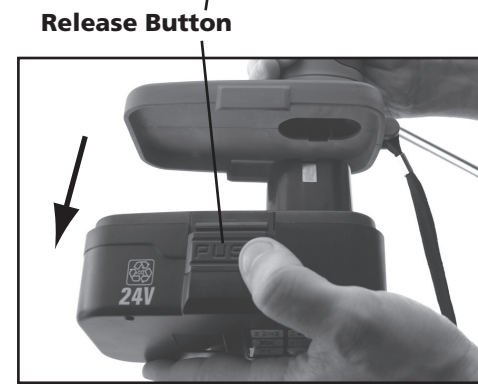
TO INSTALL BATTERY PACK

1. Place the direction of the rotation selector in center position.
2. To install the battery pack into the tool handle, align the base of the tool with the notch inside the tool's handle and slide the battery pack firmly into the handle until you hear the lock snap into place.



TO REMOVE BATTERY PACK

1. Place the direction of the rotation selector in the center position.
2. Press the release buttons and firmly pull the battery pack out of the tool handle.



CAUTION: When placing battery pack in your cordless impact wrench, be sure the raised rib on the battery pack aligns with the groove in the wrench's battery port and latches snap in place properly. Improper assembly of battery pack can cause damage to internal components.

BATTERIES

Your wrench's battery pack is equipped with Nickel-Cadmium rechargeable batteries. Length of service from each charging will depend on the type of work you are doing. The batteries in this tool have been designed to provide maximum trouble-free life. However like all batteries, they will eventually wear out. Do not disassemble the battery pack and attempt to replace the batteries. Handling of these batteries, especially when wearing rings and jewelry, could result in serious burn.

To obtain the longest possible battery life, we suggest the following:

1. Store and charge your batteries in a cool area. Temperatures above normal room temperature will shorten battery life.
2. Never store batteries in a discharged condition. Wait for battery to cool and charge immediately.
3. All batteries gradually lose their charge. The higher temperature, the quicker they lose their charge. If you store your tool for long periods of time without using them, recharge the batteries every month of two. This practice will prolong battery life.

CAUTION: Once the batteries become fully charged, we recommend that you unplug the charger from power supply and remove from battery pack.

5

SWITCH ACTION

CAUTION: Before inserting the battery pack into the tool, always check to see that the switch trigger actuates properly and returns to the "OFF" position when released.

To start the tool, simply pull the trigger. Tool speed is increased by increasing pressure on the trigger. Release the trigger to stop.

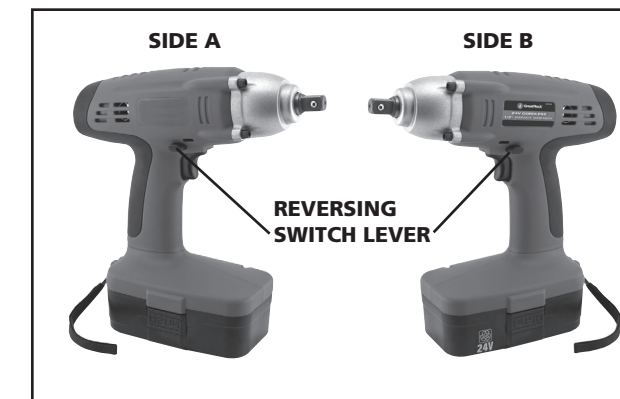


REVERSING SWITCH ACTION

CAUTION: Always check the direction of the rotation before operation. Use the reversing switch only after the tool comes to a complete stop. Changing the direction of rotation before the tool stops may damage the tool. When not operating the tool, always set the reversing switch lever to the neutral position.

This tool has a reversing switch to change the direction of rotation. Depress the reversing switch lever from the A side for counterclockwise rotation. When the switch lever is in the neutral position, the switch trigger cannot be pulled.

CAUTION: Do not change the direction of rotation while the tool is running. The tool may be damaged.



ASSEMBLY

Selecting correct socket

Always use the correct size socket for bolts and nuts. An incorrect size socket will result in inaccurate and inconsistent fastening torque and / or damage to the bolt or nut. Refer to accessories section for socket size.

Installing or removing socket

Always be sure that the tool is switched off and the battery pack is removed before installing or removing the socket. To install the socket, push it onto the anvil of the tool until it locks into place. To remove the socket, simply pull it off.



6